

# armchair guide

VACATION PLANNER



**BALD HEAD ISLAND LIMITED**  
PROPERTY MANAGEMENT



*Old Baldy Lighthouse, circa 1817*

Some of life's most  
memorable journeys  
begin off the beaten path.

Bald Head Island is more than a destination; it's a mindset. Everything about this cape island, from the absence of cars to the emphasis on simple seaside pleasures, fosters a relaxing, rejuvenating vacation experience that feels oceans away from the mainland world.



The Bald Head Island experience begins when you board the passenger ferry at Deep Point Marina in Southport, N.C. The scenic 20-minute ferry ride to the island provides a perfect transition to “turtle time,” a term islanders have long used to refer to Bald Head Island’s unhurried tempo.

Once you arrive here, you’ll travel by electric cart, bicycle or your own two feet. At the island’s posted speed limit of 18 miles per hour, you’ll be able to appreciate the sights, smells and sounds of life by the shore.



*Bald Head Island Marina*



Here, the road less traveled  
isn't a road at all.



# Reawaken your sense of adventure.

Choosing which island environment to explore first can be a tough decision. Ocean beaches stretch for 14 miles, while a serpentine tidal creek, perfect for kayaking or paddleboarding, traverses the salt marsh. The maritime forest, with its miles of trails, beckons hikers with an enchanting mix of palms, live oaks, dogwoods and cedars.

Climb a lighthouse, walk with turtles, or try your luck at fishing. The possibilities are limitless.





*The Old Boathouse, circa 1903*

Stay with us and join the clubs.





*Hole No. 9, Bald Head Island Club Golf Course*



The newly renovated Bald Head Island Club golf course has earned top accolades from *Links* magazine and *Travel & Leisure Golf* for quality of play and environmental sensitivity. Along with golf, the club offers a full range of activities, including tennis, swimming, croquet and excellent fine and casual dining.

The island's family-friendly Shoals Club overlooks the magnificent point of Cape Fear. Complementing the club's dramatic views are fine and casual dining, swimming pools, locker rooms, and a host of recreational programs for all ages and interests.

When you book most rental homes through Bald Head Island Limited Property Management, you'll gain access to temporary membership in the Shoals Club and the Bald Head Island Club during your stay.



*South Beach*



## Rest assured with Bald Head Island Limited.

Vacation rental homes are nestled throughout the island, from Harbour Village to East Beach and all points in between. Offering the best properties in the most desired locations, Bald Head Island Limited Property Management is your go-to resource when you're ready to make vacation plans. From cozy forest cottages to spacious waterfront estates, we represent the best selection of carefully chosen rental homes on Bald Head Island.

The professionals at Bald Head Island Limited Property Management are committed to making sure your vacation is truly relaxing from start to finish. We'll take care of every detail to ensure that your home meets with your approval, and we're here for you on island when any needs arise during your stay. We enjoy building lasting relationships with our guests and welcoming you back year after year. Importantly, if you're an owner with a home on our rental program, you can take comfort in our promise to meet our guests' high expectations as well as your own.

# 2013

## Bald Head Island Special Events and Traditions

Special celebrations, events and parties scheduled throughout the year make Bald Head Island the place to be winter, spring, summer or fall. Make your plans early so you don't miss out on these signature events. Visit [www.celebratebhi.com](http://www.celebratebhi.com) to view a comprehensive calendar.

### **Howl at the Moon Parties**

January 26  
February 25  
March 27  
April 25  
May 25  
June 23  
July 23  
August 21  
September 20  
October 19  
November 17  
December 17

### **Easter Weekend**

March 29-31

### **Memorial Day Weekend**

May 24-27

### **Fourth of July Celebration**

July 4-7

### **Pirate Weekend**

August 2-4

### **Labor Day Music Extravaganza**

August 30-September 2

### **Grapes & Hops Festival**

Month of October

### **Maritime Classic Road Race**

November 9

### **Thanksgiving Weekend**

November 28-December 1

### **Christmas and New Year's Eve**

December 24-31









## Our Premier Properties represent the best of the best.

When you book your vacation home through Bald Head Island Limited Property Management, you can rest easy knowing that all of the properties we represent meet a high standard for quality and comfort. We are especially proud to offer a carefully selected group of homes designated as Premier Properties, showcased in the following pages with a full-page description and a Premier Properties emblem. Ideal for larger gatherings, including wedding parties and corporate groups, each Premier Property is unique, but all feature distinctive architecture, superlative interior design and the best views on the island.

Rest assured, whether you choose a roomy waterfront Premier Property or a cozy forest cottage for two, we'll work hard to ensure you spend your vacation on Bald Head Island without a care in the world.



### **BALD HEAD ISLAND LIMITED** PROPERTY MANAGEMENT

*Key to Symbols Found on Home Listings*



Golf Cart(s)



Shoals Club  
Membership



Pet Friendly



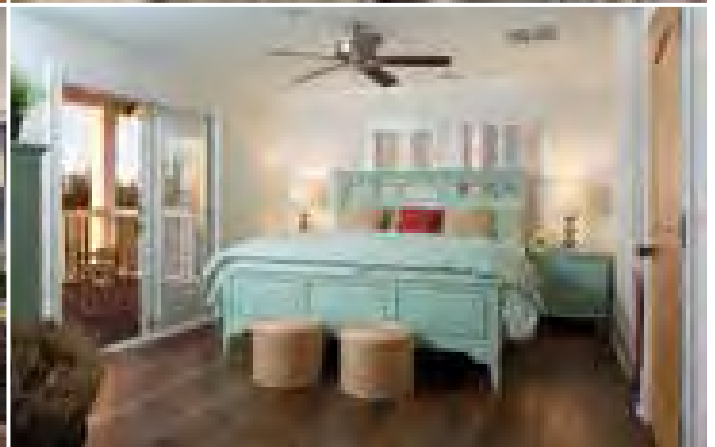
Bald Head Island Club  
Membership



WiFi



Map Number  
(see map pgs. 50-51)



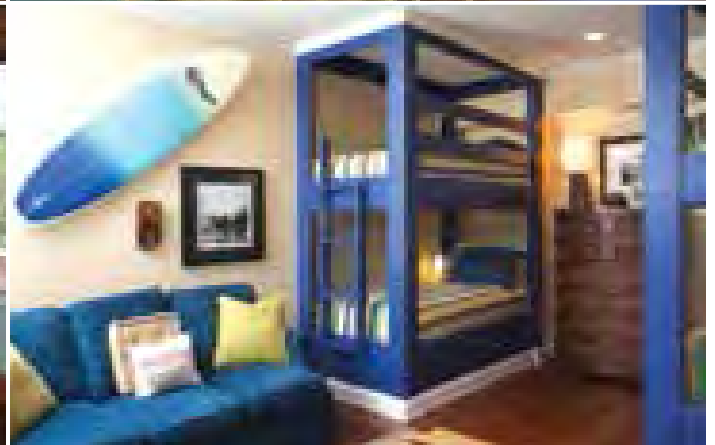
## Beacons Watch

2 Keelson Row

[www.baldheadisland.com/beaconswatch](http://www.baldheadisland.com/beaconswatch)



HARBOR VIEW. Sleeps 21. 10 bedrooms, 11 baths, 1 half bath. Handicap-friendly features. 2 minutes to beach access. Four golf carts. This home offers ample open space, making it a perfect choice for corporate groups, weddings and large families. The elegant interior features hardwood floors throughout, a gourmet kitchen and a separate bar. Eight of the ten rooms are located in the main house. A wheelchair-friendly suite is on the first floor. All suites in the home offer balconies and a private bath.



## Bella Vista

20 Indian Blanket Court

[www.baldheadisland.com/bellavista](http://www.baldheadisland.com/bellavista)

28

MAP

OCEAN VIEW. Sleeps 16. 6 bedrooms, 6 baths, 1 half bath. Elevator. Handicap-friendly features. 1 minute to beach access. Four golf carts. This luxurious home offers unobstructed panoramic views of the maritime forest and Atlantic Ocean. Professionally decorated with coastal touches throughout.





## Cape Watch Cottage

3 Ballantrae

[www.baldheadisland.com/capewatchcottage](http://www.baldheadisland.com/capewatchcottage)

**39**  
MAP



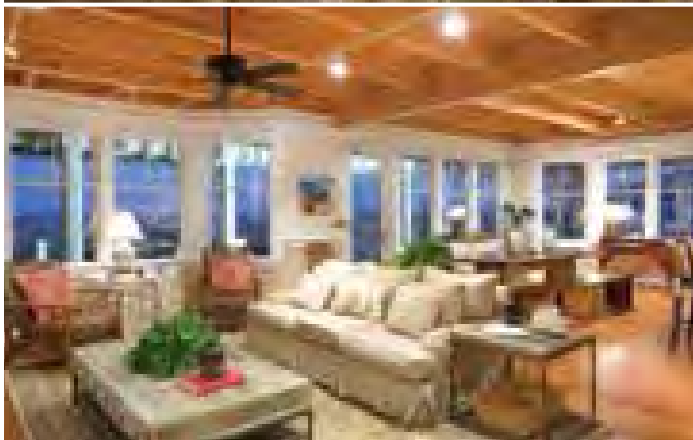
OCEANFRONT. Sleeps 10. 5 bedrooms, 4 baths. Direct beach access. Two golf carts. This oceanfront home was built with family fun in mind. Wraparound porches, a ping pong table and a horseshoe pit provide outdoor entertainment. A gourmet kitchen, whimsical architecture and ocean views offer guests a memorable stay.



**Chirico House**  MAP  
 6 Peppervine Trail  
[www.baldheadisland.com/chiricohouse](http://www.baldheadisland.com/chiricohouse)

OCEANFRONT. Sleeps 15. 6 bedrooms, 6 baths, 1 half bath. Direct beach access. Two golf carts. This home offers spaciousness and vast ocean views. Two media rooms and a sitting area provide living space for everyone. Porches can be accessed from every room.





## Coastal Beach House

220 Station House Way

[www.baldheadisland.com/coastalbeachhouse](http://www.baldheadisland.com/coastalbeachhouse)

51

MAP

OCEANFRONT. Sleeps 15. 5 bedrooms, 6 baths, 1 half bath. Fireplace. Direct beach access. Two golf carts. This home offers plenty of character, including whimsical kids' rooms, a media room, a designer kitchen and breathtaking views from its porches.







## Gone To Carolina

214 Station House Way

[www.baldheadisland.com/gonetocarolina](http://www.baldheadisland.com/gonetocarolina)

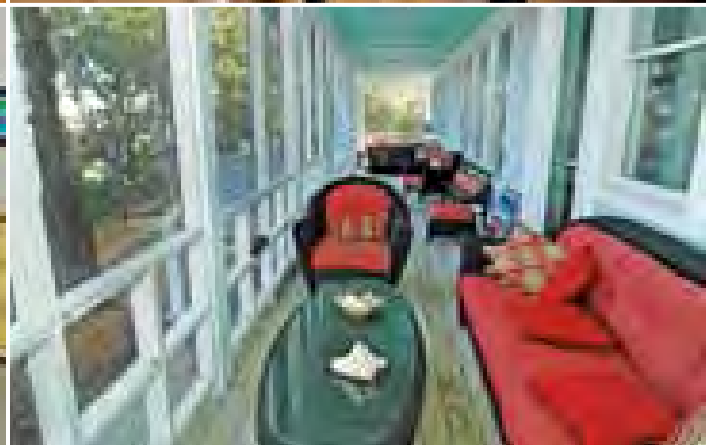
52

MAP

OCEANFRONT. Sleeps 12. 5 bedrooms, 4 baths, 1 half bath. Fireplace. Direct beach access. Two golf carts. This elegant oceanfront home offers open spaces, wraparound porches, a screened porch, a luxury master suite, and a media room. Sweeping views of East Beach and the Cape Fear Point are visible throughout the home.







## Kate's Choice

17

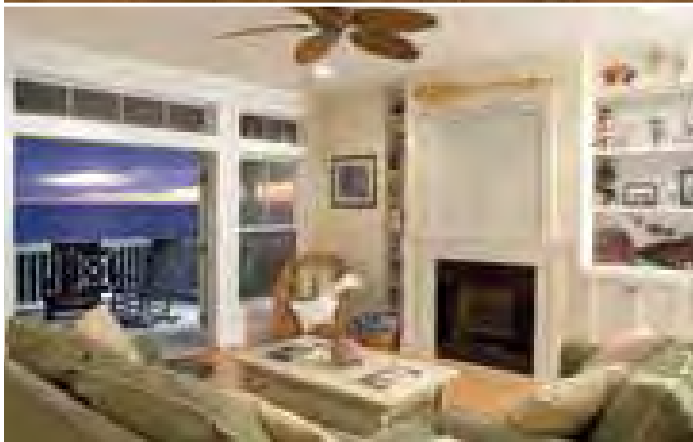
MAP

2015 Palmetto Cove

[www.baldheadisland.com/kateschoice](http://www.baldheadisland.com/kateschoice)

MARSHFRONT. Sleeps 14. 5 bedrooms, 4 baths. Fireplace. 5 minutes to beach access. Two golf carts. Nestled in the maritime forest, this marvelous home features a shared dock with access to the marsh and creek. Its expansive screened porch is perfect for outdoor entertainment.





## Krusty Krab

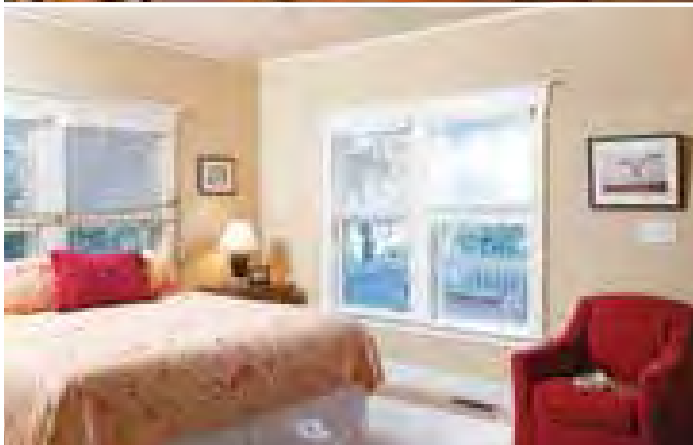
14 Peppervine Trail

[www.baldheadisland.com/krustykrab](http://www.baldheadisland.com/krustykrab)



OCEANFRONT. Sleeps 10. 4 bedrooms, 3 baths, 1 half bath. Direct beach access. Two golf carts. This oceanfront cottage offers ocean views from every room. A large open living area provides room for family and friends to gather. Plentiful porches front South Beach, providing views of the sun rising and setting over the water.





## Marsh Madness

48  
MAP

601 Currituck Way

[www.baldheadisland.com/marshmaddness](http://www.baldheadisland.com/marshmaddness)

MARSHFRONT. Sleeps 16. 7 bedrooms, including 2 bedroom crofter, 6 baths, 1 half bath. Fireplace. 2 minutes to beach access. Three golf carts. Spacious and comfortable, this home features an abundance of porches, both wraparound and screened, offering extraordinary views of the marsh.





## 'Om Sweet Home

4 Stede Bonnet Close

[www.baldheadisland.com/omsweethome](http://www.baldheadisland.com/omsweethome)

10  
MAP

MARSHFRONT. Sleeps 11. 5 bedrooms, 6 baths. 4 minutes to beach access. Two golf carts. This professionally decorated, peaceful retreat fronts the marsh. Asian-inspired, the home offers a gourmet kitchen and entertainment room with wet bar and sleeping loft. With plenty of outdoor living space, the home also offers a hot tub and infinity pool with sweeping marsh views.





## Summer House

5 Indian Blanket Court

[www.baldheadisland.com/summerhouse](http://www.baldheadisland.com/summerhouse)

26  
MAP

OCEAN VIEW. Sleeps 12. 4 bedrooms, 4 baths. Fireplace. 1 minute to beach access. Three golf carts. This dune ridge home offers panoramic ocean vistas and views of the maritime forest. Its spacious reverse floorplan has been professionally decorated.





## Summer Island

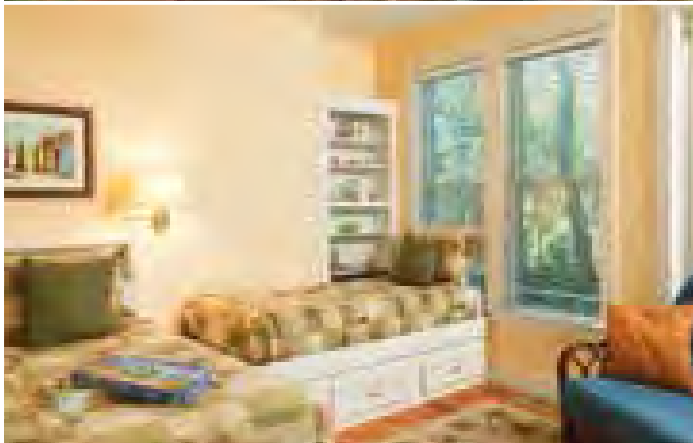
4 Coquina Trail

[www.baldheadisland.com/summerisland](http://www.baldheadisland.com/summerisland)

22  
MAP

OCEANFRONT. Sleeps 13. 6 bedrooms, 4 baths, 1 half bath. Direct beach access. Two golf carts. This spectacular property offers uninterrupted ocean views from open decks and a screened porch. The detached crofter offers additional privacy. An open floor plan provides room for large gatherings.





# Tiburon Marsh

47  
MAP

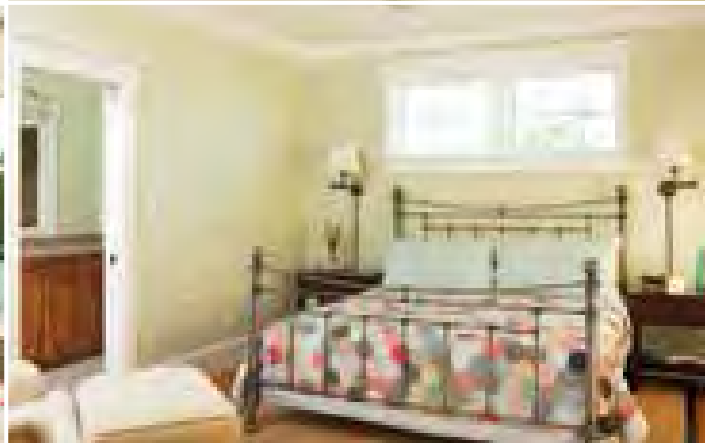
519 Currituck Way

[www.baldheadisland.com/tiburonmarsh](http://www.baldheadisland.com/tiburonmarsh)

MARSHFRONT. Sleeps 8. 4 bedrooms, 3 baths, 1 half bath. 2 minutes to beach access. Two golf carts. With breathtaking views of the marsh and a glimpse of the ocean from the deck, this spacious home offers a respite from everyday living. Enjoy the panoramic views from the dining room and indulge in the relaxing location.







## Watch Hill

979 South Bald Head Wynd

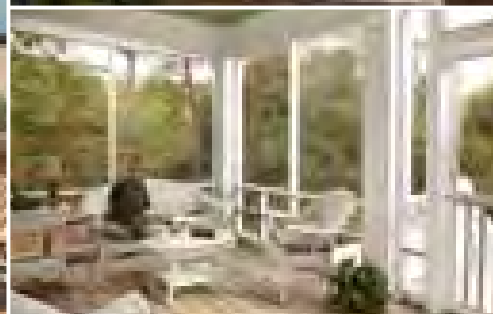
[www.baldheadisland.com/watchhill](http://www.baldheadisland.com/watchhill)

40  
MAP

OCEAN VIEW. Sleeps 13. 5 bedrooms, 4 baths, 1 half bath. Elevator. 1 minute to beach access. Three golf carts. Situated high on a dune, this home offers incredible views of the ocean, as well as Frying Pan Shoals and the maritime forest. This reverse floor plan home features an elevator, as well as meticulous carpentry.







## All Inn

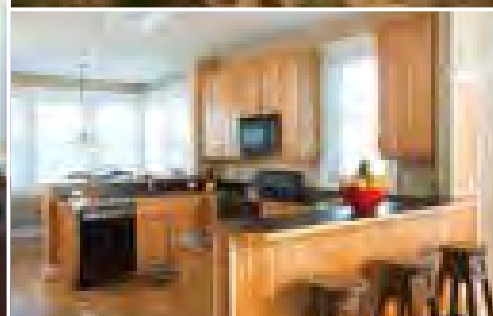
25 Dowitcher Trail

[www.baldheadisland.com/allinn](http://www.baldheadisland.com/allinn)



MAP

GOLF VIEW. Sleeps 11. 3 bedrooms, 3 baths, 1 half bath. 4 minutes to beach access. Two golf carts. Offering spectacular views of Old Baldy Lighthouse, a lagoon and the golf course, this home has a great kids' bedroom and fenced backyard. Two master bedrooms and two large screened porches are also included.



## Aquarius

20 Peppervine Trail

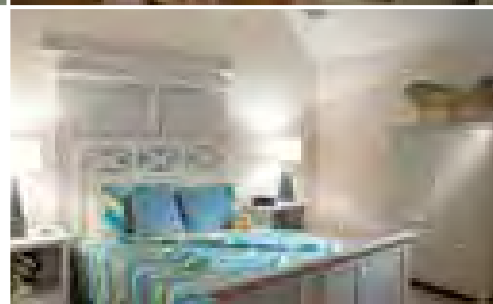
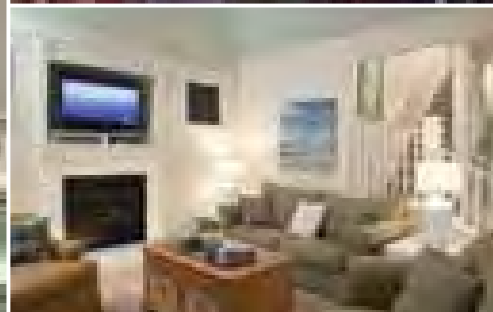
[www.baldheadisland.com/aquarius](http://www.baldheadisland.com/aquarius)



MAP

OCEANFRONT. Sleeps 12. 4 bedrooms, 4 baths. Fireplace. Direct beach access. Two golf carts. This home offers an open floorplan, hardwood floors, a screened porch and a private walkway to the beach. Each bedroom (two up and two down) has a private bath.





## Arcadia

1 Grove Court

[www.baldheadisland.com/arcadia](http://www.baldheadisland.com/arcadia)

FOREST VIEW. Sleeps 8. 3 bedrooms, 2 baths, 1 half bath. Fireplace. 2 minutes to beach access. One golf cart. A quiet cottage retreat, this home offers a traditional floor plan with comfortable living space and a light, airy décor. A screened porch and a fenced backyard are bonuses.



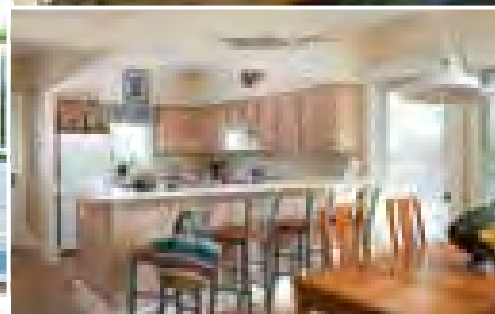
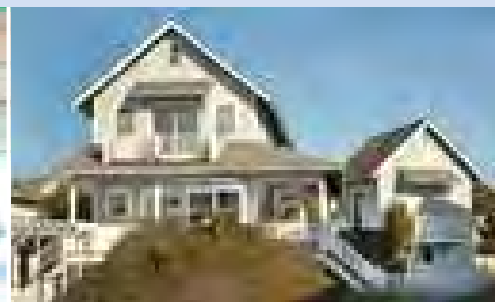
## Banana Breeze

7 Sumner's Crescent

[www.baldheadisland.com/bananabreeze](http://www.baldheadisland.com/bananabreeze)

FOREST VIEW. Sleeps 2. 1 bedroom, 1 bath. 2 minutes to beach access. One golf cart. Nestled in the maritime forest, this home is the perfect respite for couples. Just minutes to the beach or The Common at Cape Fear Station.





## Blue Heron

821 Killegray Ridge

[www.baldheadisland.com/blueheron](http://www.baldheadisland.com/blueheron)

OCEANFRONT. Sleeps 10. 3 bedrooms, 3 baths, 1 half bath. Adjacent to beach access. One golf cart. Steps to the beach, this home offers two master suites and a traditional floorplan. A screened porch provides ocean views.



MAP



## Bogan's on the Beach

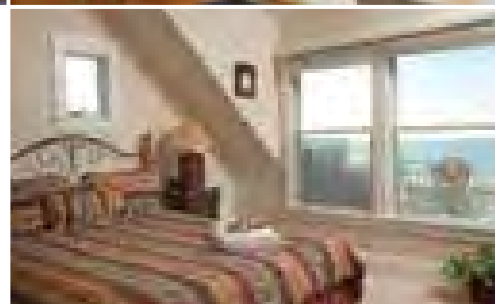
11 Scotch Bonnet

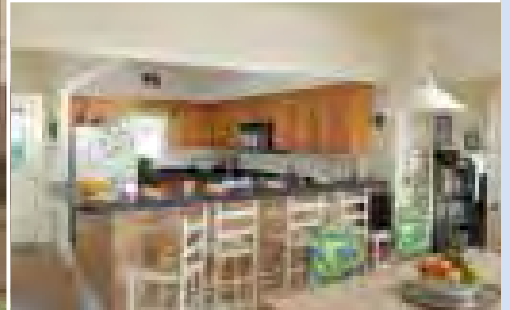
[www.baldheadisland.com/bogansonthebeach](http://www.baldheadisland.com/bogansonthebeach)

OCEANFRONT. Sleeps 12. 4 bedrooms, 3 baths, 1 half bath. Fireplace. Direct beach access. Two golf carts. This home offers a spacious interior and a wide porch, perfect for outdoor living. Enjoy breathtaking views of the ocean, a comfortable sunroom and a second floor deck.



MAP





## Bonnie Doon

5 Scotch Bonnet

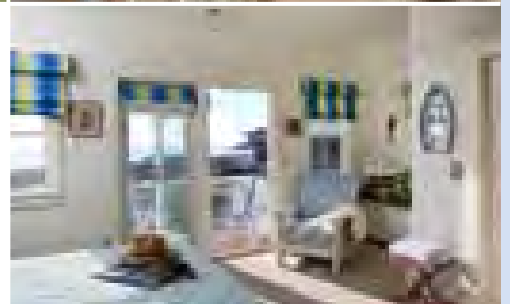
[www.baldheadisland.com/bonniecoon](http://www.baldheadisland.com/bonniecoon)

OCEANFRONT. Sleeps 6. 2 bedrooms, 2 baths, 1 half bath. Fireplace. Direct beach access. One golf cart. This quintessential beach cottage is steps away from the ocean. Enjoy ocean views from the sunroom, open decks, and a cozy porch swing.



29

MAP



## Captain Charlie's I

6602 East Federal Road

[www.baldheadisland.com/captaincharlies1](http://www.baldheadisland.com/captaincharlies1)

OCEANFRONT. Sleeps 6. 3 bedrooms, 1 bath. Direct beach access. One golf cart. One of three historic cottages once home to the lighthouse keeper, this home offers plenty of period charm. The wood-clad walls are painted white, as is the tongue-and-groove ceiling. An open deck adds to the living space.



41

MAP





## Captain Charlie's II

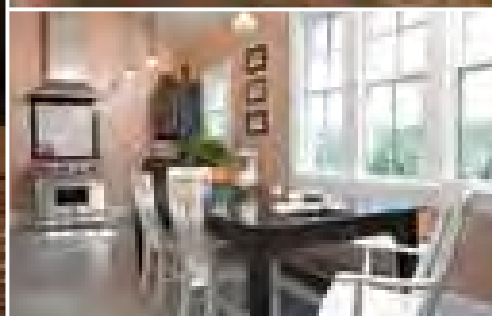


42  
MAP

6604 East Federal Road

[www.baldheadisland.com/captaincharlies2](http://www.baldheadisland.com/captaincharlies2)

OCEANFRONT. Sleeps 4. 2 bedrooms, 1 bath. Direct beach access. One golf cart. A traditional, historic cottage offering panoramic views of the ocean, this home has wood-paneled walls with a distressed green finish offset by crisp white trim. Handsome and rustic in decor, the interior is comfortable.



## Captain Charlie's III



43  
MAP

6606 East Federal Road

[www.baldheadisland.com/captaincharlies3](http://www.baldheadisland.com/captaincharlies3)

OCEANFRONT. Sleeps 6. 3 bedrooms, 2 baths. Direct beach access. One golf cart. The natural wood paneling of this historic cottage is reminiscent of the time when the lighthouse keeper lived there. A rocking chair porch offers spectacular views of Cape Fear.

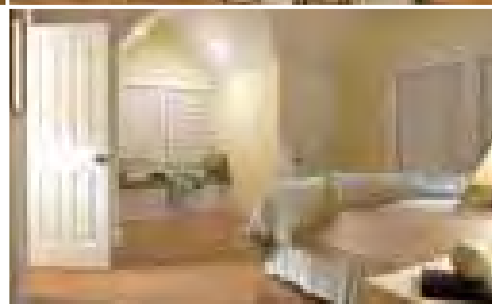
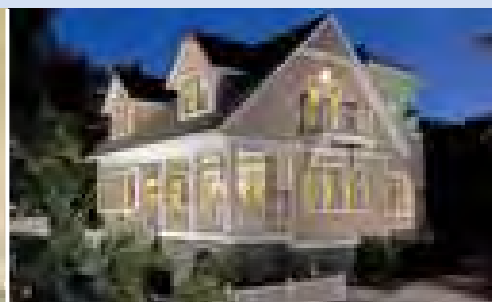


## Cattails

3B Scotch Bonnet

[www.baldheadisland.com/cattails](http://www.baldheadisland.com/cattails)

OCEANFRONT. Sleeps 7. 2 bedrooms plus loft, 2 baths, 1 half bath. Fireplace. Direct beach access. One golf cart. Enjoy ocean views from the master bedroom and the spacious back porch in this cozy duplex cottage. The traditional floorplan has a comfortable and open interior.



## Conch Cottage

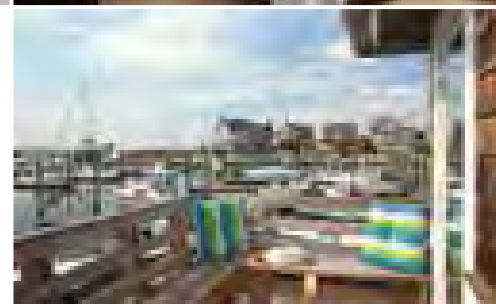
602 Currituck Way

[www.baldheadisland.com/conchcottage](http://www.baldheadisland.com/conchcottage)

FOREST VIEW. Sleeps 8. 3 bedrooms, 3 baths, 1 half bath. Fireplace. 2 minutes to beach access. One golf cart. Nestled in the forest of Cape Fear Station, this home offers peaceful tranquility and is minutes from East Beach.







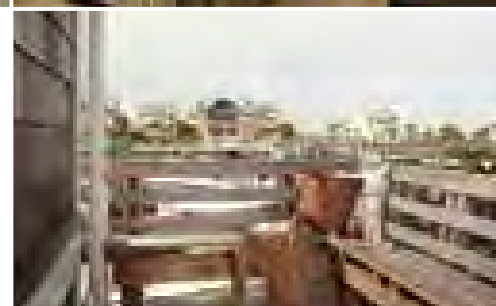
## The Elements - Air



80 Keelson Row

[www.baldheadisland.com/elementsair](http://www.baldheadisland.com/elementsair)

HARBOR VIEW. Sleeps 2. 1 bedroom, 1 bath. 1 minute to beach access. One golf cart. Located in quaint Harbour Village, this studio apartment is perfect for short getaways. Single travelers and couples will appreciate the great views and proximity to the lighthouse and beach.



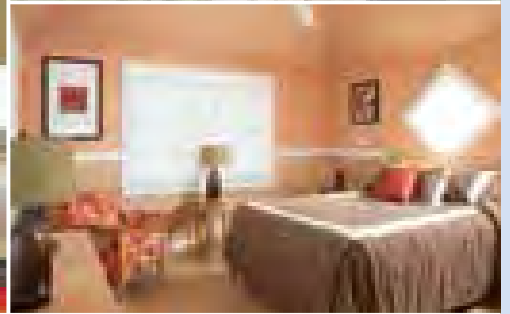
## The Elements - Earth



78 Keelson Row

[www.baldheadisland.com/elementsearth](http://www.baldheadisland.com/elementsearth)

HARBOR VIEW. Sleeps 2. 1 bedroom, 1 bath. 1 minute to beach access. One golf cart. Fronting the marina in Harbour Village, this studio apartment is outfitted with the overnight traveler in mind. Enjoy quick access to the lighthouse and watching the boats come and go.



## The Elements - Fire



4

MAP

70 Keelson Row

[www.baldheadisland.com/elementsfire](http://www.baldheadisland.com/elementsfire)

HARBOR VIEW. Sleeps 2. 1 bedroom, 1 bath. 1 minute to beach access. One golf cart. Located marina front, this studio apartment is a great couple's hideaway. Enjoy all the conveniences of Harbour Village, plus proximity to West Beach.



## The Elements - Water



3

MAP

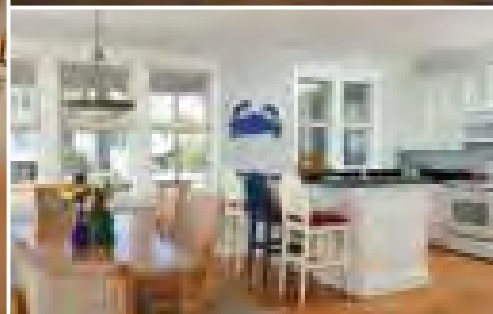
68 Keelson Row

[www.baldheadisland.com/elementswater](http://www.baldheadisland.com/elementswater)

HARBOR VIEW. Sleeps 2. 1 bedroom, 1 bath. 1 minute to beach access. One golf cart. Outstanding views of the marina make this cozy studio apartment a great value for couples. All the conveniences of Harbour Village are right outside your door.





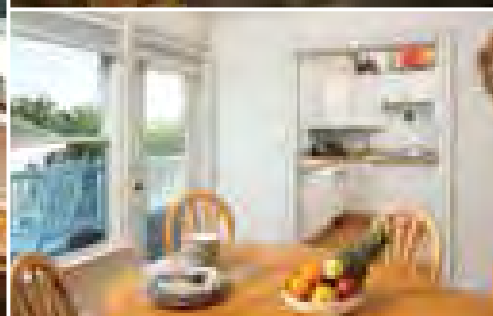


## Footprints in the Sand

14 Coquina Trail

[www.baldheadisland.com/footprintsinthesand](http://www.baldheadisland.com/footprintsinthesand)

OCEANFRONT. Sleeps 10. 4 bedrooms, 3 baths, 1 half bath. Direct beach access. Two golf carts. Enjoy stunning views from nearly every room in this home, along with an expansive wraparound deck and screened porch. A private boardwalk leads straight to the beach.



## Hallelujah

19 Indian Blanket Court

[www.baldheadisland.com/hallelujah](http://www.baldheadisland.com/hallelujah)

OCEAN VIEW. Sleeps 8. 3 bedrooms, 4 baths. 2 minutes to beach access. One golf cart. This beautiful reverse floorplan home features a large family room with views of the maritime forest and the ocean. An expansive master suite is another bonus. Additional sleeping in study.





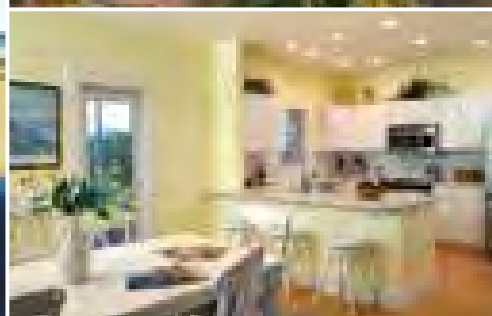
## Indigo Pelican



28 Sand Piper Trail

[www.baldheadisland.com/indigopelican](http://www.baldheadisland.com/indigopelican)

OCEANFRONT. Sleeps 16. 5 bedrooms, 5 baths, 1 half bath. Fireplace. Adjacent to beach access. Two golf carts. This house is furnished with large families in mind. Enjoy ocean views from the spacious living area and large wraparound porch.



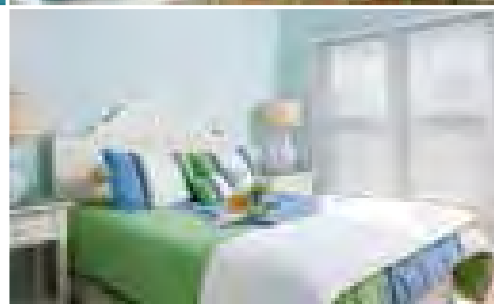
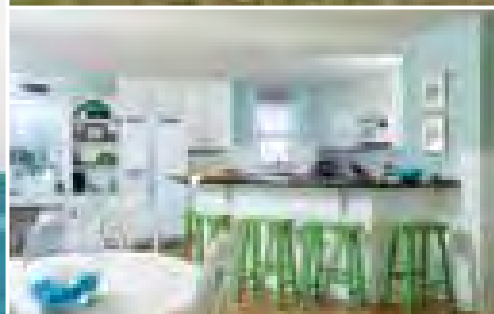
## Irish Mist



18 Cape Fear Trail

[www.baldheadisland.com/irishmist](http://www.baldheadisland.com/irishmist)

OCEAN VIEW. Sleeps 8. 4 bedrooms, 3 baths, 1 half bath. Fireplace. 1 minute to beach access. Two golf carts. This vacation home is steps away from a quiet beachfront. Watch sunsets on the Cape Fear River from one of the many decks, or relax in the large living area.



## Island Retreat

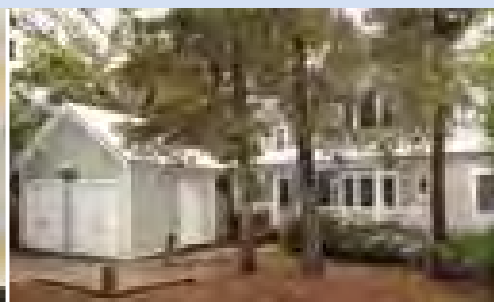


MAP

3 Coquina Trail

[www.baldheadisland.com/islandretreat](http://www.baldheadisland.com/islandretreat)

OCEANFRONT. Sleeps 8. 4 bedrooms, 3 baths, 1 half bath. Adjacent to beach access. Two golf carts. This open floorplan home is decorated with the hues of the ocean. Just steps from South Beach, this home is five minutes to the Bald Head Island Club or Shoals Club.



## Jade Oak

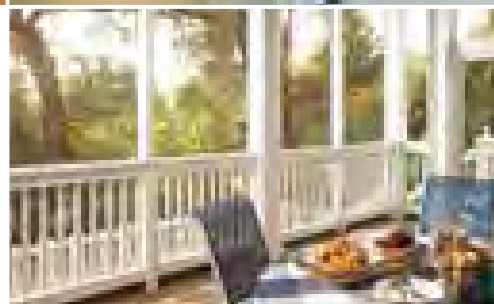


MAP

15 Live Oak Trail

[www.baldheadisland.com/jadeoak](http://www.baldheadisland.com/jadeoak)

FOREST VIEW. Sleeps 10. 4 bedrooms, 3 baths, 1 half bath. 4 minutes to beach access. Two golf carts. This home offers views of a lagoon and the 13th fairway from its two screened porches. This traditional floorplan has an open living area downstairs and a sitting room upstairs.





## Jake's Watch

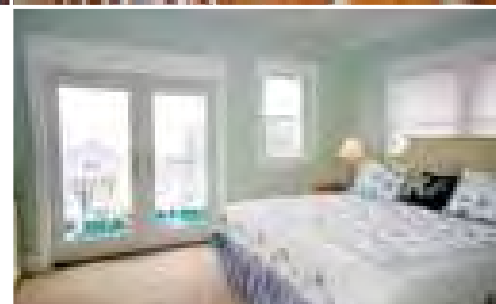


35  
MAP

811B Killegray Ridge

[www.baldheadisland.com/jakeswatch](http://www.baldheadisland.com/jakeswatch)

OCEANFRONT. Sleeps 6. 2 bedrooms plus loft, 2 baths, 1 half bath. Direct beach access. One golf cart. This comfortable duplex cottage features porches upstairs and down, including a private deck off the master bedroom. The floorplan is traditional, with living areas downstairs and a third floor loft.



## JJ's Hideaway

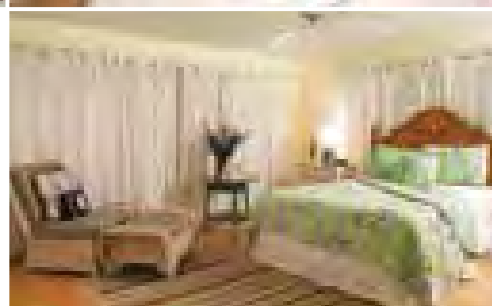
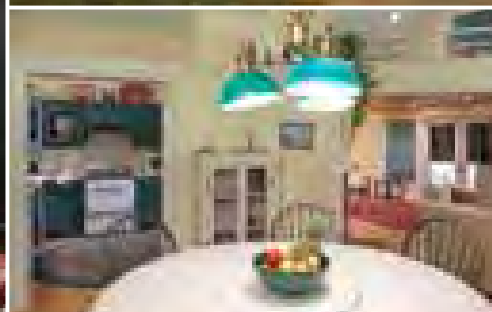


36  
MAP

3 Skye Crescent

[www.baldheadisland.com/jjshideaway](http://www.baldheadisland.com/jjshideaway)

OCEAN VIEW. Sleeps 12. 4 bedrooms, 4 baths, 1 half bath. 1 minute to beach access. Two golf carts. Perfectly situated along South Beach, this cottage is an ideal spot for family vacations. Perched high enough on the dune, the home allows for ocean breezes and great views.



## Laurie's Loft



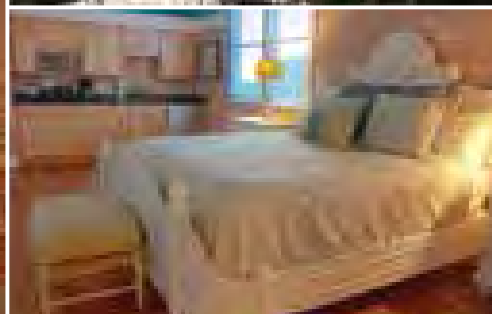
25

MAP

9 Brown Pelican Trail

[www.baldheadisland.com/lauriesloft](http://www.baldheadisland.com/lauriesloft)

OCEANFRONT. Sleeps 10. 3 bedrooms plus loft, 2 baths, 1 half bath. Adjacent to beach access. Two golf carts. This reverse floorplan offers ocean views from the second floor. A pirate's ladder leads to a children's loft hideout. Additional sleeping in the sitting room.



## Marsh Hawk Cottage



13

MAP

52 Earl of Craven

[www.baldheadisland.com/marshhawk](http://www.baldheadisland.com/marshhawk)

GOLF VIEW. Sleeps 6. 3 bedrooms, 3.5 baths. 3 minutes to beach access. One golf cart. This Hammocks home features a reverse floor plan with the great room, kitchen, and roof deck on the second floor. A third detached bedroom offers additional privacy.





## My Three Dunes

3 Sea Lavender Court

[www.baldheadisland.com/mythreedunes](http://www.baldheadisland.com/mythreedunes)



18

MAP

OCEAN VIEW. Sleeps 12. 5 bedrooms, 4 baths, 1 half bath. 1 minute to beach access. Two golf carts. This centrally located home is tastefully decorated and offers views of the ocean from its living room. Relax on one of the porches or in the sunroom.



## Neverland

203 Whale Head Way

[www.baldheadisland.com/neverland](http://www.baldheadisland.com/neverland)



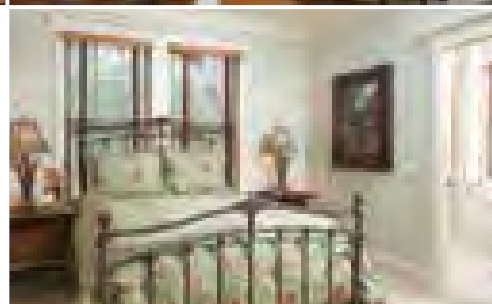
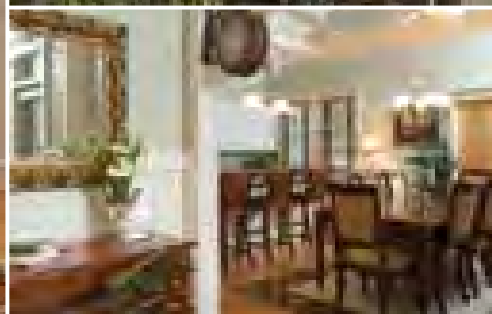
46

MAP

FOREST VIEW. Sleeps 10. 5 bedrooms, 4 baths. Fireplace. 2 minutes to beach access. Two golf carts. This attractively decorated home is centrally located in Cape Fear Station. Spacious inside and out, decks and an outside dining area are perfect for family gatherings.







## Oak Tree Hollow



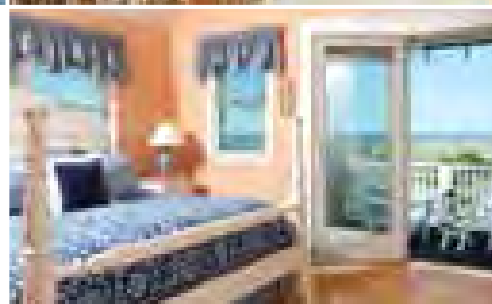
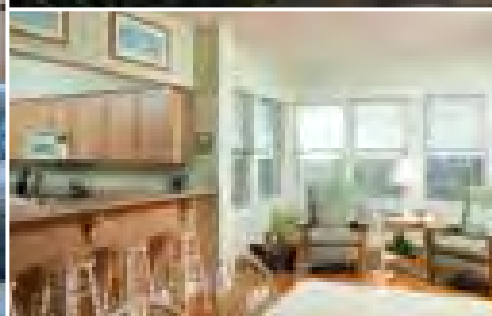
12

MAP

17 Live Oak Trail

[www.baldheadisland.com/oaktreehollow](http://www.baldheadisland.com/oaktreehollow)

FOREST VIEW. Sleeps 8. 3 bedrooms, 4 baths, 1 half bath. Fireplace. 4 minutes to beach access. One golf cart. This traditional floor plan home has a cozy living room and large kitchen/dining room for great family gatherings. Each of the three bedrooms has its own bath.



## Paradise



38

MAP

829 Killegray Ridge

[www.baldheadisland.com/paradise](http://www.baldheadisland.com/paradise)

OCEANFRONT. Sleeps 6. 3 bedrooms, 3 baths, 1 half bath. Fireplace. Direct beach access. One golf cart. Enjoy panoramic views of the island from this cozy, oceanfront beach house. Located in charming Killegray Ridge, this family-friendly home provides all the comforts of home.

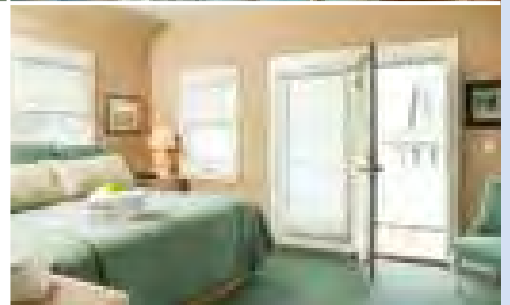


## Purrfect Paws

8 Scotch Bonnet

[www.baldheadisland.com/purrfectpaws](http://www.baldheadisland.com/purrfectpaws)

OCEANFRONT. Sleeps 6. 2 bedrooms, 2 baths, 1 half bath. Fireplace. Direct beach access. One golf cart. A wraparound screened porch and upstairs deck offer views of the sunrise over the Frying Pan Shoals or sunset over the Cape Fear River.

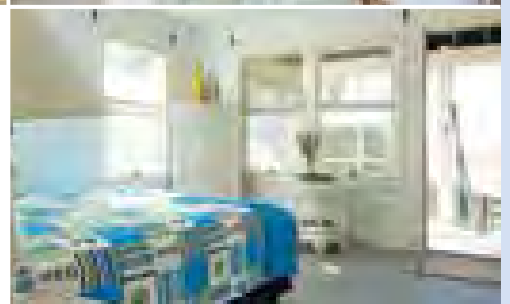


## Sailing

7 Scotch Bonnet

[www.baldheadisland.com/sailing](http://www.baldheadisland.com/sailing)

OCEANFRONT. Sleeps 4. 2 bedrooms, 2 baths. Direct beach access. One golf cart. Splendid views of the ocean can be seen from the upper deck and living area of this reverse floor plan beach cottage. True to its name, the interior has a nautical theme with ship models and flag-inspired window treatments.





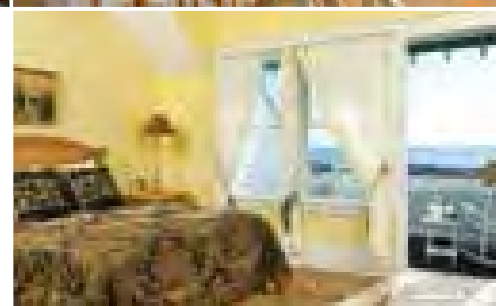


## Salt Meadow Cottage

42 Earl of Craven

[www.baldheadisland.com/saltmeadow](http://www.baldheadisland.com/saltmeadow)

GOLF VIEW. Sleeps 6. 3 bedrooms, 3 baths. 3 minutes to beach access. One golf cart. This Hammocks home offers a reverse floor plan with the great room, kitchen, and roof deck on the second floor.



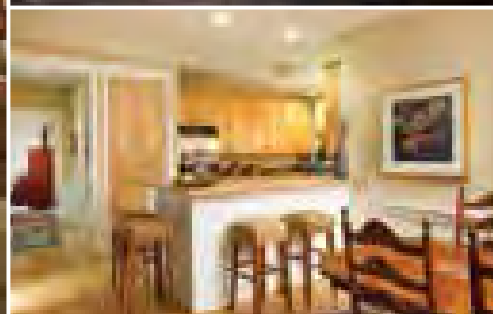
## SeaShells

803B Killegray Ridge

[www.baldheadisland.com/seashells](http://www.baldheadisland.com/seashells)

OCEANFRONT. Sleeps 8. 2 bedrooms, plus loft, 3 baths, 1 half bath. Direct beach access. One golf cart. Enjoy ocean views from the master bedroom deck or spacious back porch. Just steps to the beach, this duplex cottage offers a traditional floorplan with an open layout in the downstairs living areas.





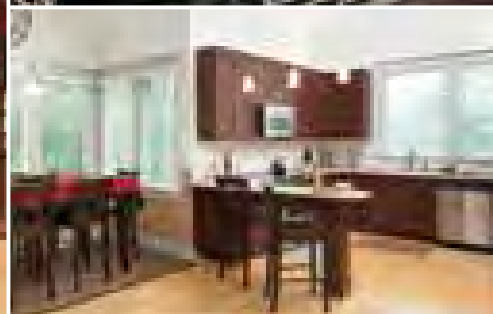
## Stone's Throw



613 Chicamacomico Way

[www.baldheadisland.com/stonesthrow](http://www.baldheadisland.com/stonesthrow)

FOREST VIEW. Sleeps 6. 3 bedrooms, 2 baths, 1 half bath. 2 minutes to beach access. One golf cart. This home is a short distance to The Common at Cape Fear Station and the beach. The master bedroom features a four-poster bed. The home also offers a screened and open porch.



## Sumner's Crescent 12

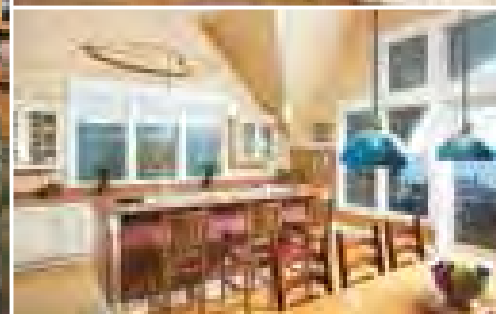


12 Sumner's Crescent

[www.baldheadisland.com/sumnerscrescent12](http://www.baldheadisland.com/sumnerscrescent12)

FOREST VIEW. Sleeps 8. 4 bedrooms, 4 baths. 2 minutes to beach access. Two golf carts. Nestled in the maritime forest of Cape Fear Station, this home is just minutes to the beach. A screened porch and open deck provide additional outdoor living space.





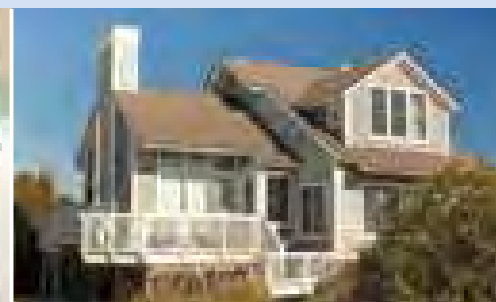
## Twin Peaks



216 Row Boat Row

[www.baldheadisland.com/twinpeaks](http://www.baldheadisland.com/twinpeaks)

RIVER BEACHFRONT. Sleeps 8. 3 bedrooms, 3 baths, 1 half bath. Direct beach access. One golf cart. This reverse floor plan Harbour Village home offers an upper deck and spacious living area. The master bedroom and one bedroom is located downstairs, along with an additional sitting area.



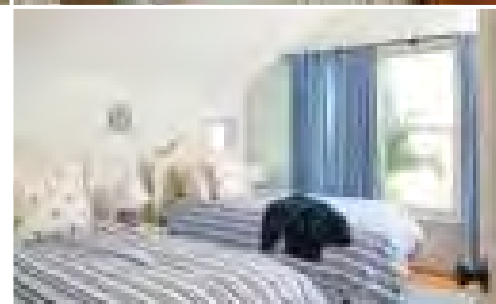
## Two Views



401 South Bald Head Wynd

[www.baldheadisland.com/twoviews](http://www.baldheadisland.com/twoviews)

OCEAN VIEW. Sleeps 12. 4 bedrooms, 3 baths, 1 half bath. Fireplace. 1 minute to beach access. Two golf carts. This home offers ocean and golf course views. Large enough to accommodate two families, it has two bedrooms and a sitting area on each floor.





## BALD HEAD ISLAND LIMITED

PROPERTY MANAGEMENT

### RENTAL HOME DETAILS, RATES & RESERVATIONS

**2013 reservations may be made online at [www.BaldHeadIsland.com](http://www.BaldHeadIsland.com), or by calling 1-800-432-RENT or by emailing [vacations@bhisland.com](mailto:vacations@bhisland.com). Tentative 2014 reservations are subject to changes in rates and availability.**

Detailed descriptions, photographs, floorplans, check-in/check-out days, and rates for all Bald Head Island Limited Property Management rental homes can be found at [www.BaldHeadIsland.com](http://www.BaldHeadIsland.com), by calling 1-800-432-RENT or by emailing [vacations@bhisland.com](mailto:vacations@bhisland.com).

All rental accommodations provide fully equipped kitchens, washers and dryers, vacuum cleaners, color TV, central heat and air conditioning, telephones, cribs (generally pack & plays), high chairs, bath towels, bed linens and the use of an electric cart(s). Other items such as beach chairs, beach umbrellas, boogie boards, surf boards, paddleboards and bicycles may be rented on the island. Complimentary initial supplies of cleaning products, paper towels, bath tissue and soap are provided at check-in. Additional supplies can be purchased at the Maritime Market.

There is a two-night minimum on most island homes from 1/1/2013-5/30/2013 and 9/3/2013-12/31/2013. Exceptions include a one-night minimum for The Elements and some one-bedroom homes. There is a seven-night minimum from 5/31/2013-9/2/2013; however, depending upon availability, you may book two weeks out from your arrival date for a two-night minimum stay.

Rates posted online or quoted by Rental Relations agents are valid for day of quote. Rates displayed include accommodations, security deposit damage waiver and temporary membership to the Bald Head Island Club and the Shoals Club. Total charges upon booking include optional travel insurance and taxes. Ferry tickets and parking are not included in rental rates.

Please note: Descriptions of accommodations contained in this brochure and found online at [www.BaldHeadIsland.com](http://www.BaldHeadIsland.com) are based, in part, upon information provided by the owners of the premises described. Bald Head Island Limited has endeavored to ensure the accuracy of this information; however, we cannot be responsible for misinformation or typographical errors. All prices, fees, specifications, configurations and availability are subject to change without notice.

**Please visit [www.BaldHeadIsland.com](http://www.BaldHeadIsland.com) to view a complete overview of Bald Head Island Limited Property Management's rental policies, details regarding deposits and payments, as well as suggestions on how to pack, directions to the Deep Point Marina ferry terminal and other helpful information.**

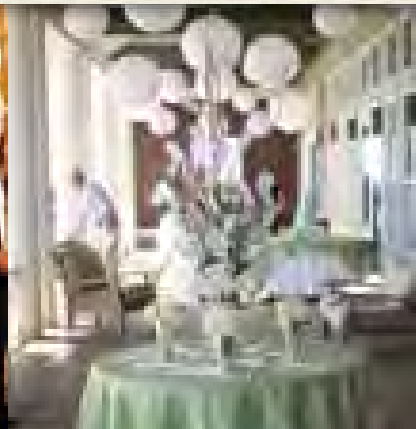
# Anything But Ordinary



When it comes to your wedding, ordinary just won't do. Good thing the Shoals Club on beautiful, car-free Bald Head Island is anything but. Our oceanfront club offers unparalleled views of the Atlantic and elegant indoor and outdoor spaces for your ceremony and reception. Let our dedicated event planning staff meticulously attend to every detail of your dream wedding.

910-457-3705 | [www.baldheadislandwedding.com](http://www.baldheadislandwedding.com) | [eventplanning@bhisland.com](mailto:eventplanning@bhisland.com)

*Shoals  
Club*

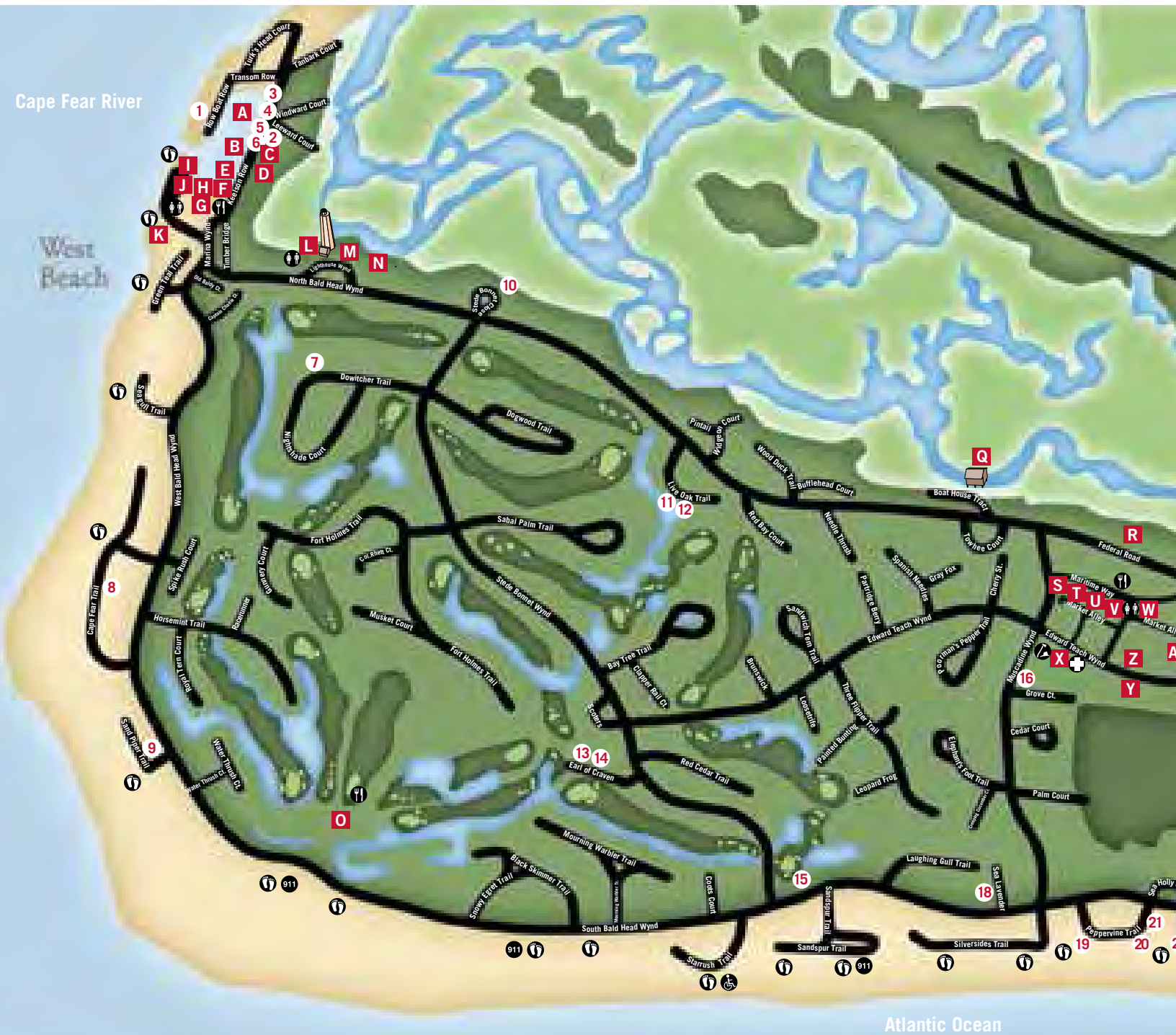


## ACCOMMODATIONS

- |                        |                           |                          |
|------------------------|---------------------------|--------------------------|
| 1 Twin Peaks           | 15 Two Views              | 28 Bella Vista           |
| 2 Beacons Watch        | 16 Arcadia                | 29 Bonnie Doon           |
| 3 The Elements - Water | 17 Kate's Choice          | 30 Cattails              |
| 4 The Elements - Fire  | 18 My Three Dunes         | 31 Sailing               |
| 5 The Elements - Earth | 19 Chirico House          | 32 Purrfect Paws         |
| 6 The Elements - Air   | 20 Krusty Krab            | 33 Bogan's on the Beach  |
| 7 All Inn              | 21 Aquarius               | 34 SeaShells             |
| 8 Irish Mist           | 22 Summer Island          | 35 Jake's Watch          |
| 9 Indigo Pelican       | 23 Island Retreat         | 36 JJ's Hideaway         |
| 10 'Om Sweet Home      | 24 Footprints in the Sand | 37 Blue Heron            |
| 11 Jade Oak            | 25 Laurie's Loft          | 38 Paradise              |
| 12 Oak Tree Hollow     | 26 Summer House           | 39 Cape Watch Cottage    |
| 13 Marsh Hawk Cottage  | 27 Hallelujah             | 40 Watch Hill            |
| 14 Salt Meadow Cottage |                           | 41 Captain Charlie's I   |
|                        |                           | 42 Captain Charlie's II  |
|                        |                           | 43 Captain Charlie's III |
|                        |                           | 44 Sumner's Crescent 12  |
|                        |                           | 45 Banana Breeze         |
|                        |                           | 46 Neverland             |
|                        |                           | 47 Tiburon Marsh         |
|                        |                           | 48 Marsh Madness         |
|                        |                           | 49 Conch Cottage         |
|                        |                           | 50 Stone's Throw         |
|                        |                           | 51 Coastal Beach House   |
|                        |                           | 52 Gone To Carolina      |

## ISLAND AMENITIES AND LANDMARKS

- A Bald Head Island Marina
- B The Clubs of Bald Head Island Membership Sales Office
- C Coastal Urge Board Room
- D Harborside Pavilion
- E The Sail Shop/Will o' the Wisp
- F MoJo's on the Harbor
- G Bald Head Island Limited, LLC Administration Building
  - Property Management and Rental Relations
- H Dockmaster Convenience Store and Fuel Dock
- I Ferry Landing





- J Bald Head Island Limited Real Estate Sales
- K RiverLanding1524
  - Riverside Adventure Co.
  - Delphina Family Eatery & Pub
  - Sandpiper Sweets
  - Children's Courtyard
- L Old Baldy Lighthouse and Smith Island Museum
- M Bald Head Island Village Center
  - Bald Head Association Building
  - Village Town Hall
  - Village Chapel
  - Village Post Office
- N Village Creek Access
- O Bald Head Island Club

- Lounge and Dining Rooms
- Golf Course
- Driving Range/Putting Green
- Golf Shop
- Fitness Center
- Swimming Pool
- Tennis Courts
- Croquet Greenswards
- Pelicattessen Snack Bar
- P The Hammocks
- Q Old Boat House (c. 1903)
- R M. Kent Mitchell Nature Trail
- S Bald Head Island Limited, LLC Planning Department
- T Room Service
- U Island Retreat Spa and Salon
- V The Maritime Market

- W The Shops at Maritime Way
  - Be Our Guest
  - Canopy Outfitters
  - Coastal Urge Retail Shop
  - Coastal Urge Bike Shop
  - Island Hardware
  - Maritime Passage
  - Shoot Photography
  - The Silver Peddler
- X Village of Bald Head Island Fire/Police/EMT Station
- Y Bald Head Island Limited, LLC Maintenance Services
  - Vehicle Sales & Maintenance
  - Facility Maintenance
  - Laundry and Housekeeping

- Z Village of Bald Head Island Utilities Department
- AA Merchant's Row
- BB Captain Charlie's Station (c. 1903)
- CC Cape Fear Lighthouse Foundation c. 1903)
- DD Bald Head Island Conservancy
  - Turtle Central Gift Shop
  - Barrier Island Study Center
  - Fleming Environmental Center
  - Generator Building (c. 1903)
  - Mike's Bites
- EE The Common at Cape Fear Station

- FF Shoals Club
  - Dining Room
  - Event Pavilion
  - Swimming Pool
  - Fitness Center
  - Sandbar Grille

**LEGEND**

- ① Beach Access
- ♿ Handicapped Access
- 🚻 Public Restrooms
- 🍽 Restaurant
- 🔥 Fire Station
- 🏠 Emergency Medical Services
- ☎ Emergency Telephone







## BALD HEAD ISLAND LIMITED PROPERTY MANAGEMENT

*Visit us on Bald Head Island at 6 Marina Wynd (near the ferry landing).*

For vacation rentals, wedding accommodations and corporate retreats,  
contact us at 800-432-RENT or [vacations@bhisland.com](mailto:vacations@bhisland.com).

**Website:** [www.BaldHeadIsland.com](http://www.BaldHeadIsland.com)

**Facebook:** [www.facebook.com/BaldHeadIslandNews](http://www.facebook.com/BaldHeadIslandNews)

**Twitter:** [www.twitter.com/bhinews](http://www.twitter.com/bhinews)

**YouTube:** [www.youtube.com/BaldHeadIsland](http://www.youtube.com/BaldHeadIsland)

**Blog:** [www.BaldHeadIsland.com/blog](http://www.BaldHeadIsland.com/blog)

Download the free **Bald Head Island** app from Android and iTunes stores.

